



427 Burwood Highway VERMONT SOUTH

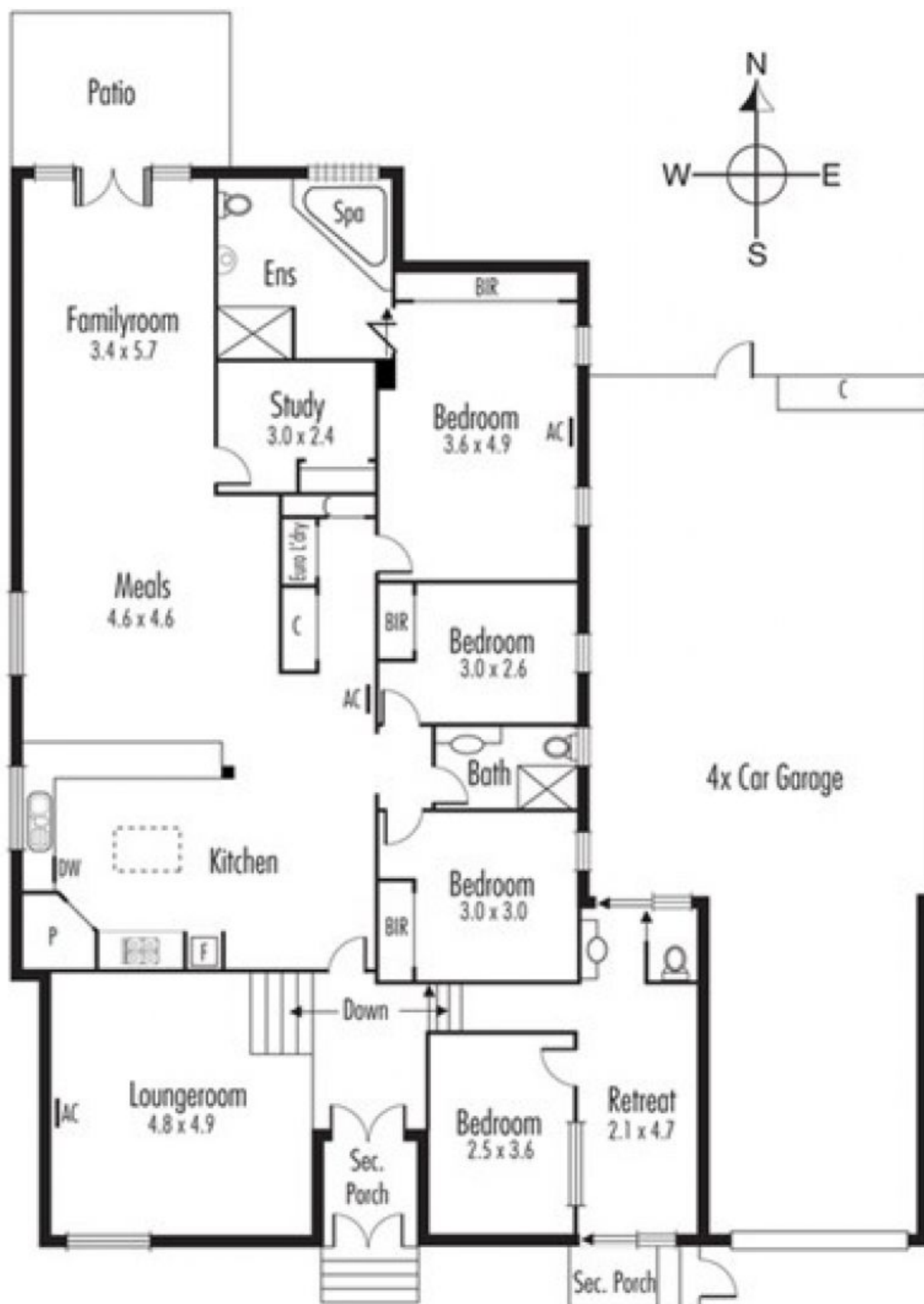
 4
  2
  3

Large Family House with Home Office

Very spacious and well-presented 4 bedroom plus study room home, with extra area for home office comprising reception area with separate entrance, consulting room with heating/cooling and a small bathroom. The main house area offers zoned gas ducted heating, reverse cycle split system air conditioners and ceiling fans, a separate formal sunken lounge area, huge family/rumpus areas, excellent updated kitchen with gas cooking and dishwasher, ensuite to master with spa, separate main bathroom, separate laundry area, storage shed, triple tandem garage facility coupled with outdoor covered area. Located opposite trams and buses and quick access to schools and shops.



Paul Jung



TOTAL APPROX. FLOOR AREA 262 SQ.M.

Whilst every attempt has been made to ensure the accuracy of the floor plan contained here, measurements of doors, windows, rooms and any other items are approximate and no responsibility is taken for any error, omission, or mis-statement. This plan is for illustrative purposes only and should be used as such by any prospective purchaser. The services, systems and appliances shown have not been tested and no guarantee as to their operability or efficiency can be given.