



3 Janine Road SPRINGVALE SOUTH



3



2



2

Sweet Home & Exclusive Family Entertainer!

Located in one of the most popular pockets of Springvale South, this well-kept vinyl cladding 3 bedroom home plus 1 bedroom bungalow is set on a large rectangular block of land 700m2(approx), ready for you and your family to move in and enjoy.

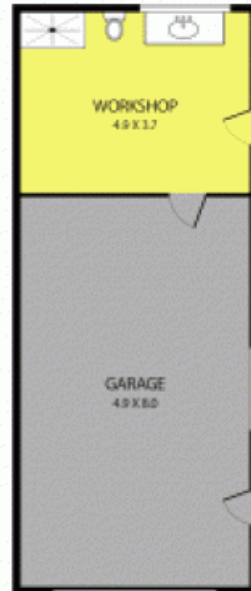
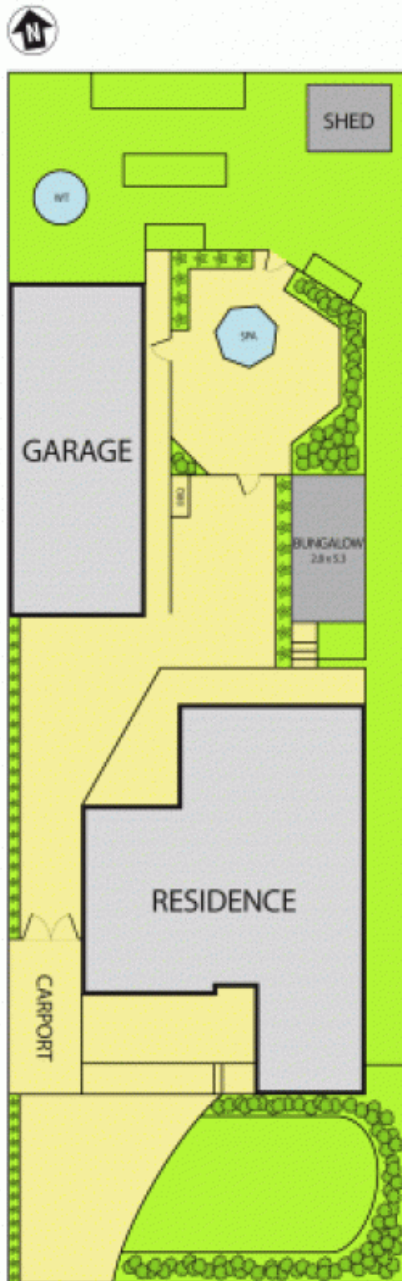
Keysborough College is just opposite your front door, walking distance to Pre-School and Heatherhill Primary School, short drive to Burden Park, Mackay and Springvale Shopping Central, Churches and Temples and public transportation.

Featuring: Formal lounge room, 3 good sized bedrooms with 1XBIR, central bathroom, separate toilet, updated kitchen with an open plan and meals area, S/S appliances, dish washer, ducted heating, evaporative cooling and 2X A/C, 5000L water tank, 1 car carport, 2 cars LU garage plus an additional work shop which has a shower and toilet.

Step outside you will find a BBQ area, fenced and under covered outdoor spa designed with only one thing in mind... perfect entertaining! Manicured garden, grow your own veggie and much more...

Leyton Real Estate

3 Janine Road, Springvale South



(NOT IN POSITION)



Please note: All stated dimensions are approximate only. Particulars given are for general information only and do not constitute any representation on the part of the vendor or agent.