



12 Nithsdale Road NOBLE PARK

3 1 4

Priced to Sell!

On offer is this 3 bedroom double storey WB home sitting on a big block of land of approximately 600m². Positioned on the high side of the hill and looking out to views, choose to redevelop, renovate or build your dream home!

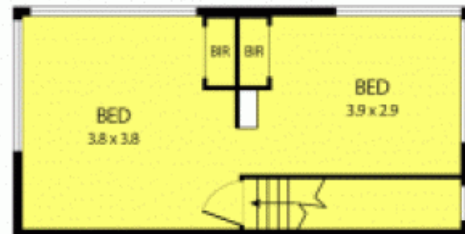
Walking distance to Ross Reserve, Sandown station, short drive to Harrisfield primary school and shops with easy access to Princess Hwy.

Don't miss out, call Jeffery Fung or Phuc Le now!

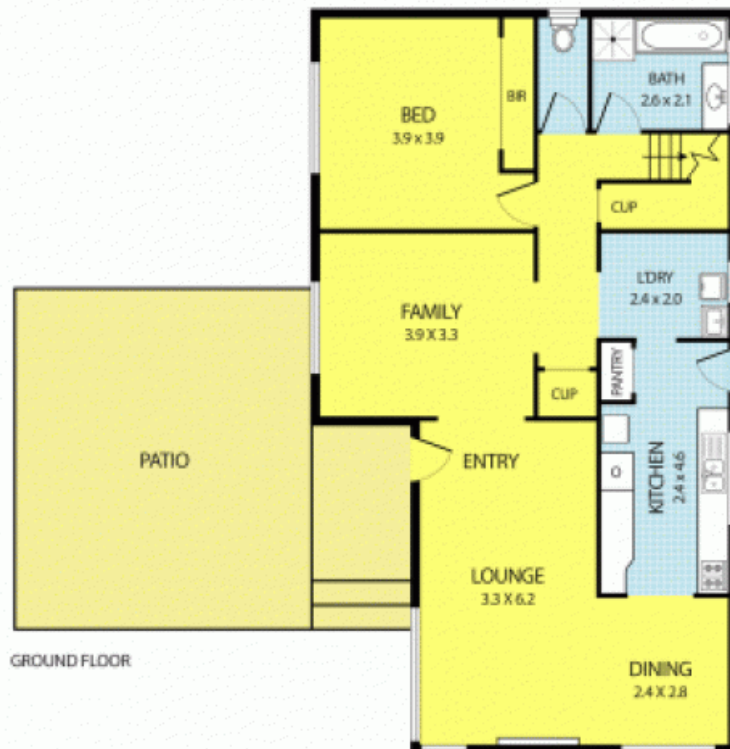
Photo ID Required for all Inspections

Leyton Real Estate

12 Nithsdale Road, Noble Park



FIRST FLOOR



GROUND FLOOR