



30 Comber Street NOBLE PARK

 3  1  5

IDEAL FOR FIRST HOME BUYER OR INVESTOR!

This well-kept corner timber home is located within a short walk to Sandown Station, buzzy Springvale Central, Buses, and Schools.

Featuring: formal lounge room, 3 bedrooms with 2 BIR, updated kitchen and adjoining to meals area, ducted heating, 1xA/C and all gas appliances.

Restumped, resprayed roof, freshly painted, auto secure roller shutters to all windows, new colour bond fencings, concreted front yard which has plenty car spaces and low maintenance garden.

Land size: 620m approx., possible to keep the existing home and build a second dwelling at the back (STCA).

Hurry...it won't last!

Contact Thu Le 0421 903 814.

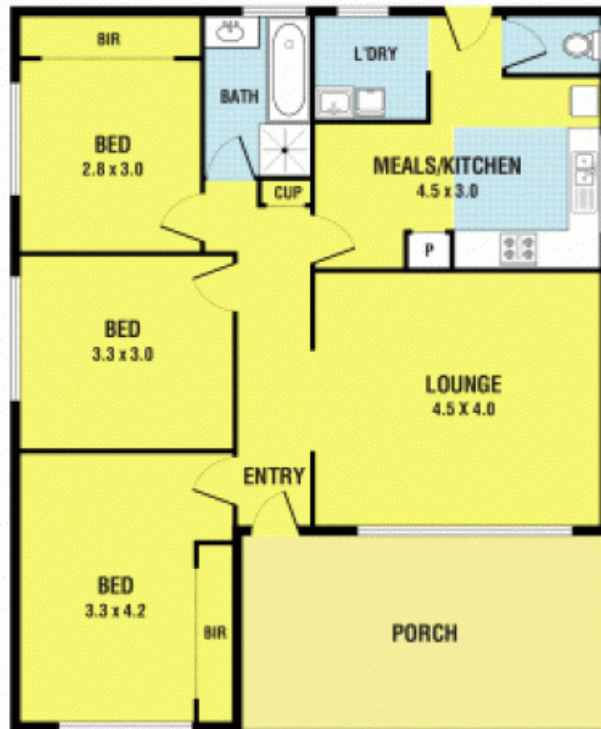
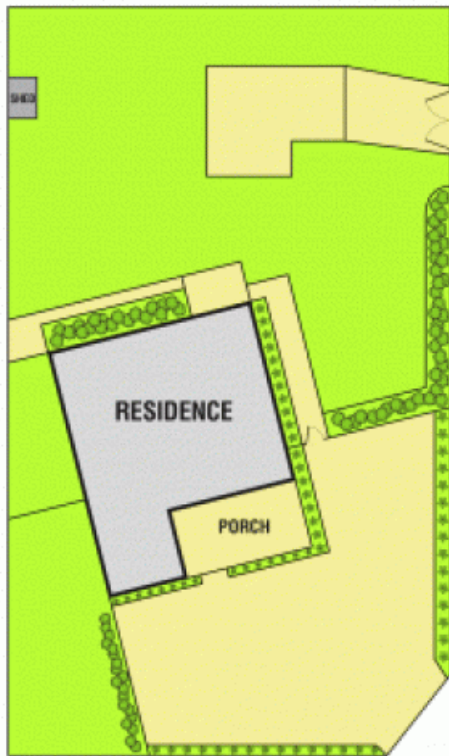
Photo ID Required for all Inspections.



Thu Le

0421 903 814

30 Comber Street, Noble Park



Please note: All stated dimensions are approximate only. Particulars given are for general information only and do not constitute any representation on the part of the vendor or agent.