



3/921-923 Heatherton Road SPRINGVALE

 2
  1
  1

To Lease Or To Live In!

Great opportunity for 1st home buyer, downsizing or investor to own this 2 bedroom unit in a prime location. Bus stops, Medical Centre, Childcare right around the corner, Burden Park is just across the road, walking distance to Heatherhill Primary & Secondary Schools, and short drive to vibrant Springvale and Springvale South Shopping Centres.

Featuring:

Spacious lounge room, 2 good size BR with 2 BIR, updated kitchen and bathroom, floating floorboard in lounge and bedrooms, tiles in wet area.

Split A/C, single LU garage, low maintenance garden

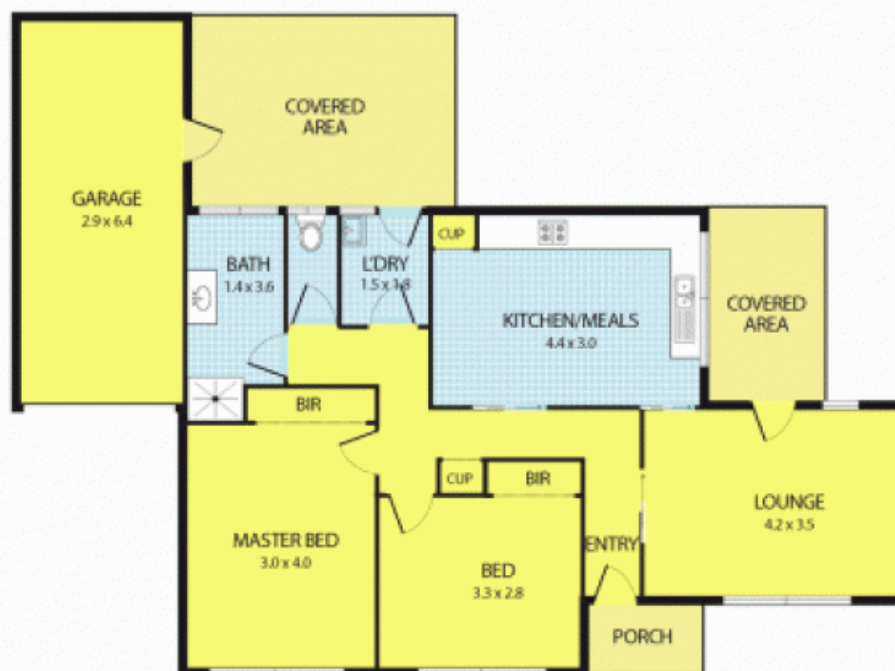
Won't last long!



Thu Le

0421 903 814

3/921-923 Heatherton Road, Springvale



Please note: All stated dimensions are approximate only. Particulars given are for general information only and do not constitute any representation on the part of the vendor or agent.