



2 Gertrude Court NOBLE PARK

5 2 4

Family Home

Search no further, this renovated home has plenty of rooms for you and your family to enjoy, which is located in a peaceful cal-de-sac with a beautiful backyard and multiple car spaces. Alternatively you can turn this into an investment that has the potential for fantastic high returns.

Only minutes' walk to bus stops and just a short drive to Parkmore Shopping Centre, Yarraman Train Station, Cafe, Churches and schools such as Keysborough Secondary College and Springside Kindergarten Centre.

This BV home is set on a block of land 530m² (approx.) which offers 5 bedrooms plus study with 1 lounge area, a large sunroom, plus a sleepout at the back. Further features include: FES, BIRs to all bedrooms, 2 bathrooms and 2 toilets, all gas appliances, ducted heating, tiles and carpet throughout with floorboards in the lounge, NBN ready, Fire Wood Heater, carport and much more....

Put this home on top of your inspection list!

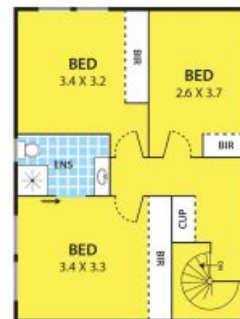
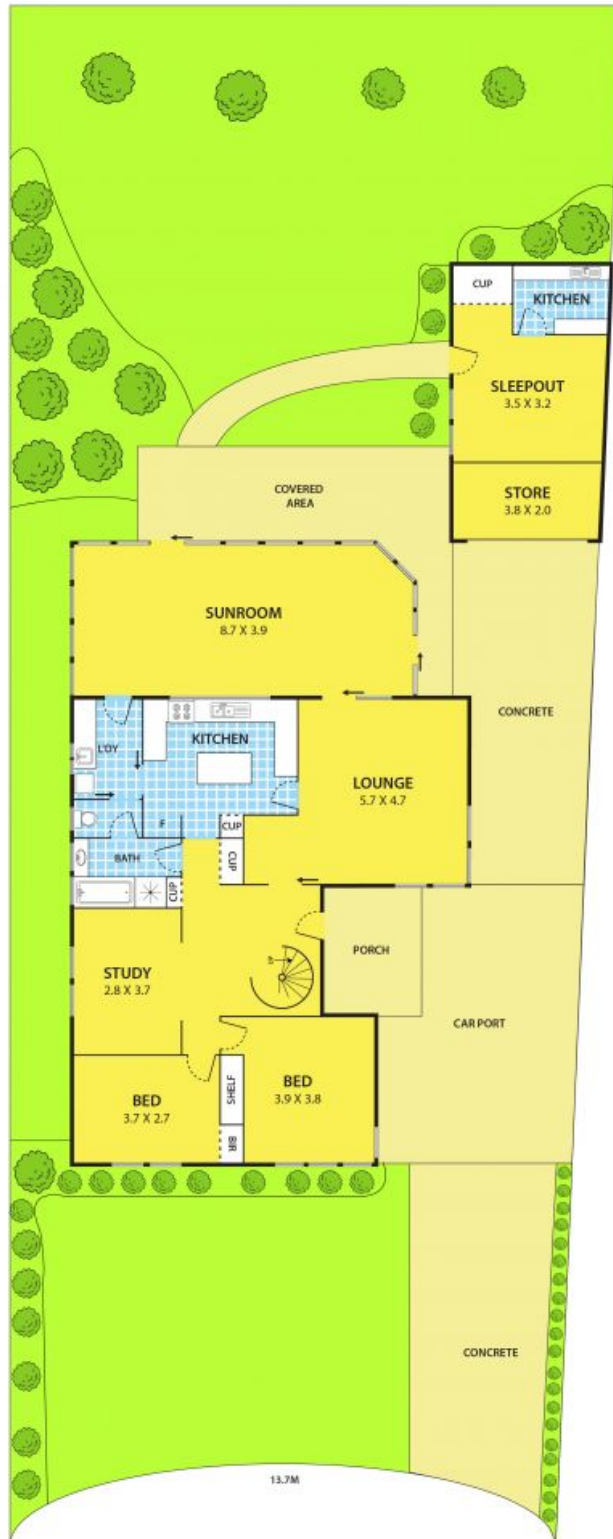
Contact Kosal Prum and Bruce Ung today!



Kosal Prum

0423 610 870

2 Gertrude Court, NOBLE PARK



DISCLAIMER:

Please note plans are indicative only and not drawn to exact scale.
All dimensions are approximate