



11 Amersham Avenue SPRINGVALE SOUTH

4 2 4

## Dare to Compare

Dreaming for a Double Storey Brick Home in a peaceful family area for you and your loved ones? You will be proud to call this your home!

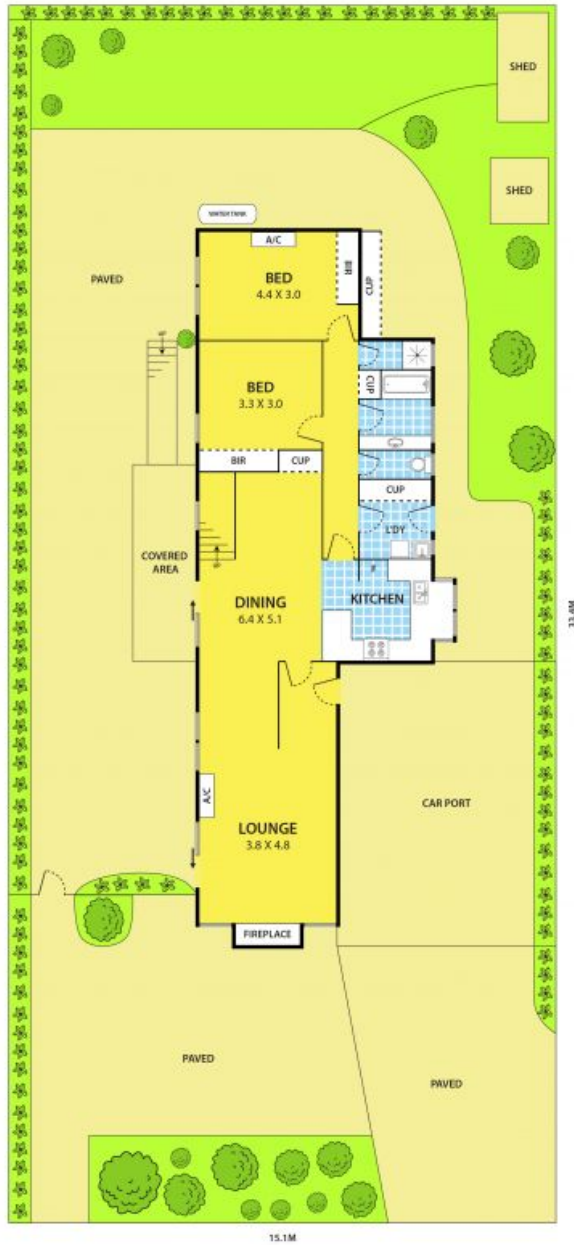
Sitting on a large block of approx. 540sqm, in one of the most desirable pockets in Springvale South, is ready for you and your family to move in or for those savvy investors, you could surely see the potential for high rental returns with low maintenance.

You are only a few steps to a Local Park, Temples and bus stops on Springvale Road. Minutes' drive to Aldi Supermarket, Schools, Springvale Train Station, Springvale Central and Springvale South Shopping Centres.

This beautifully maintained designer built home is offering: 4 generous bedrooms, all with built in robes and floorboards, 3 living areas including a formal lounge with original fire place, a dining area with a built in bar, your own wine cellar under the staircase and a spacious retreat on upper level. Well-appointed and renovated kitchen with stone bench, gas cooking and a dishwasher. Updated 2 bathrooms, a separate shower room and 2 toilets are evenly laid on both floors. A private balcony connects to retreat and paved outdoor area and separate entrance to the upstairs. Plenty of lights and storage spaces throughout

Leyton Real Estate

11 Amersham Avenue, SPRINGVALE SOUTH



DISCLAIMER:

Please note plans are indicative only and not drawn to exact scale.  
All dimensions are approximate