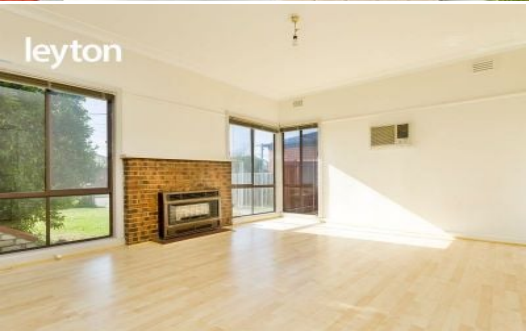


leyton



12 Treesbank Avenue SPRINGVALE

 3
  1
  1

### Multi-Unit Development Site (STCA)

On offer is a fantastic piece of Springvale Real Estate not to be missed! Few doors away from Heatherhill Primary School, walking distances to many points of interests including shops, Killester and Heatherhill Secondary College, Sandown Train Station and bus stops...

This 3 bedroom timber home sits on a fantastic rectangular block of land that has so much potential just waiting to be explored. The block itself measures 720m2 (approx.) which has the potential for further development (STCA) or for the one lucky one to build their own dream home. Consisting of a formal lounge with A/C, spacious bedrooms, all with BIRs, kitchen and meals area, all gas appliances and a garage.

Don't miss out on this golden opportunity!

Inspect as advertised or by appointment.

**PLEASE NOTE:**

- All enquiries MUST include a contact telephone number
- Photo ID Required for all Inspections



**Thu Le**

0421 903 814

# 12 Treesbank Avenue, Springvale



Please note: All stated dimensions are approximate only. Particulars given are for general information only and do not constitute any representation on the part of the vendor or agent.