



2/16 Gatum Court NOBLE PARK

 4
  2
  3

Single-Level Excellence

Look no further, start pampering your family with this rendered brick veneer home located in a desirable pocket of Noble Park. Offering an impressive single-level design with a vision of perfection! Only two on the block and with very little maintenance required to your living lifestyle.

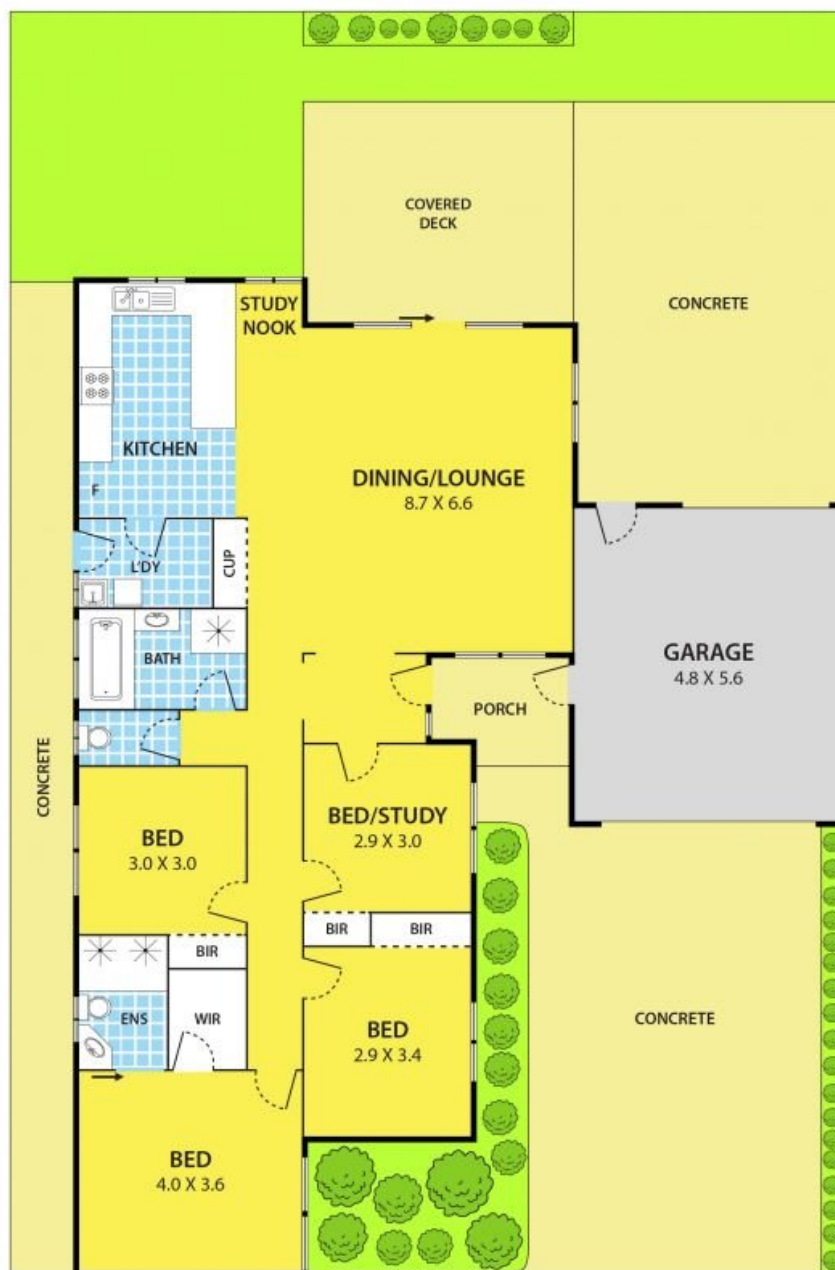
Tennis Club within walking distance and only minutes' drive to Kinderworld Day Care Centre, Belvedere Aged Care, Harrisfield Primary School, In2Fitness Health Club, South Eastern Private Hospital, Noble Park Aquatic Centre, Noble Park Station and surrounding cafes and restaurants. Easy access to Princes Highway and Heatherton Road.

Featuring:

- 4 gorgeous bedrooms with BIRs, including master bedroom with WIR plus double shower full en-suit
- Spacious lounge
- Study nook
- 2 bathrooms & 2 toilets
- Modern kitchen with gas appliances which opens to dining and lounge areas
- Ducted heating

Leyton Real Estate

2/16 Gatum Court, NOBLE PARK



DISCLAIMER:

Please note plans are indicative only and not drawn to exact scale.
All dimensions are approximate