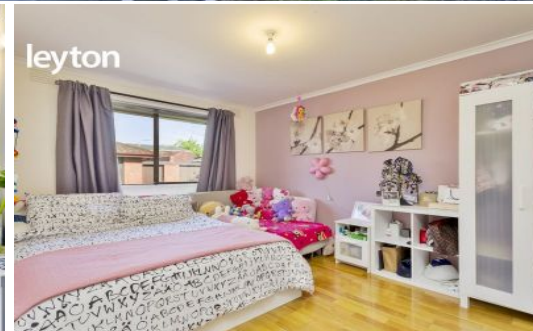


leyton



3/921-923 Heatherton Road SPRINGVALE

🛏️ 2 🚿 1 🚗 1

Contemporary Living in a High Demand Location!!

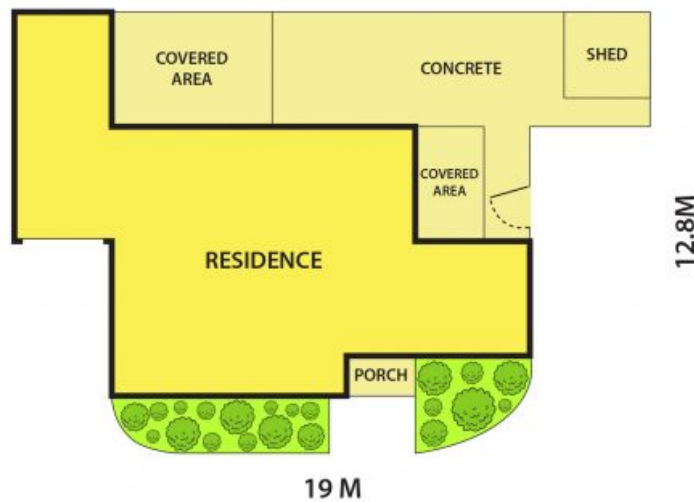
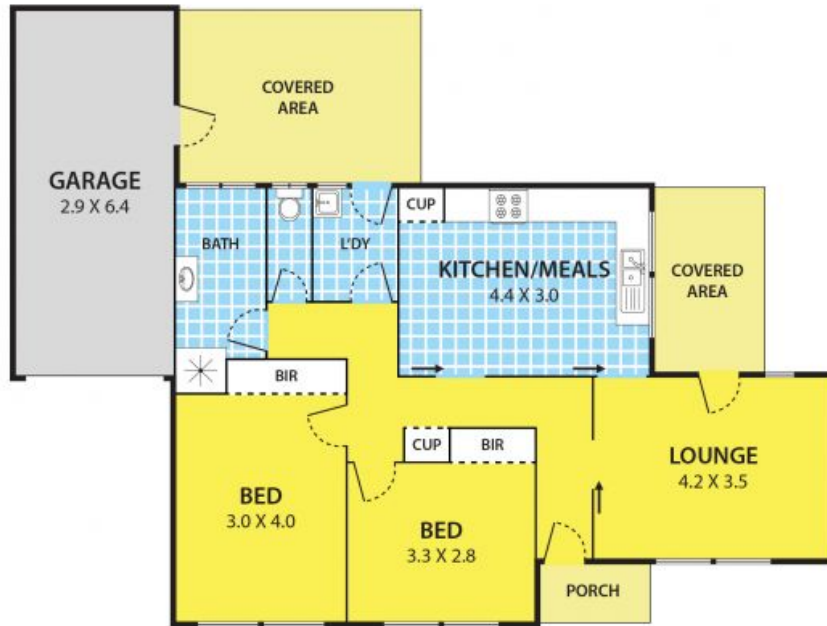
Centrally located just minutes to Springvale Central, Heather Hill Primary School, Killester College and Burden Park; this attractive modern 2 bedroom unit offers a simple low maintenance lifestyle for those looking to downsize or to purchase for an investment!

This contemporary unit comprises of a beautiful spacious kitchen/dinning, adjoining lounge, 2 bedroom with built in robes, an updated central bathroom, separate toilet and a private pergola in the courtyard for you to unwind and enjoy the outside air. Other features of this lovely unit include, timber floors, ducted heating, refrigerated cooling, and single car garage.

Please call me today to arrange an inspection!

Leyton Real Estate

3/921-923 Heatherton Road, SPRINGVALE



DISCLAIMER:

Please note plans are indicative only and not drawn to exact scale.
All dimensions are approximate