



1 Scotch Avenue KEYSBOROUGH

4 2 4

## Resort Style Living In A Prestigious Location!!!

You will find plenty of room to enjoy family life here with this contemporary, cleverly designed double story home built by one of Australia's award winning builder, Metricon Homes.

This stylishly design home features; 4 substantial bedrooms, 3 toilets, 2 bathrooms, a centrally located open plan resort style living area with an elegant granite bench top kitchen, stainless steel appliances, gas oven, pantry, laundry, a spacious indoor family dining/lounge which opens up to a grand covered outdoor entertainment area that is beautifully landscaped.

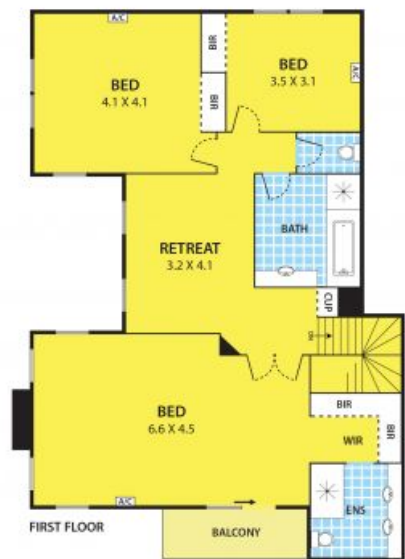
All complimented by the luxury of a large sitting lounge in the front of the house.

Other features include a double remote garage with direct access into the home, 5 split systems heating/cooling unit for your comfort, surveillance cameras and security alarm.

Located on a corner block in the Keys Estate, you are just minutes away from everything such as; Haileybury, Lighthouse and Sirius College, Bus Stop with direct line to the railway station, Parkmore Shopping Centre, Braeside

Leyton Real Estate

1 Scotch Avenue, KEYSBOROUGH



DISCLAIMER:

Please note plans are indicative only and not drawn to exact scale.  
All dimensions are approximate