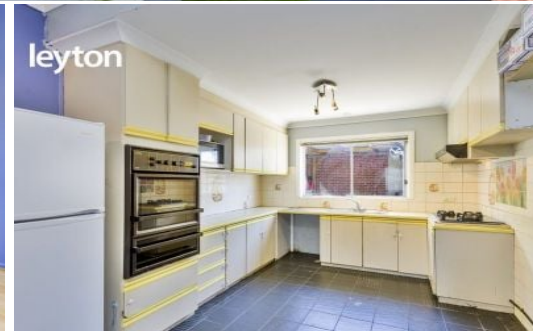


leyton



1/1 Myers Court NOBLE PARK

 2  1  1

Front Unit - Great Start

A great opportunity to secure a front sitting unit, on a block of land of approximately 250m². Ideal for first home buyers, downsizers or astute investors.

Nestled in a peaceful cul-de-sac, with easy access to Princes Highway and Heatherton Road. Walking distance to Noble Park Train Station, Secondary College, Noble Park Central Shopping Centre, Aquatic Centre and many more.

Original Home Consists of:

- 2 Bedrooms
- 1 Bathroom
- Spacious living room
- Timber Flooring
- Lockable carport

Terms: 10% deposit
Balance: 30/60/90 days

PLEASE NOTE:



E Sha Hat

1/1 Myers Court, NOBLE PARK

