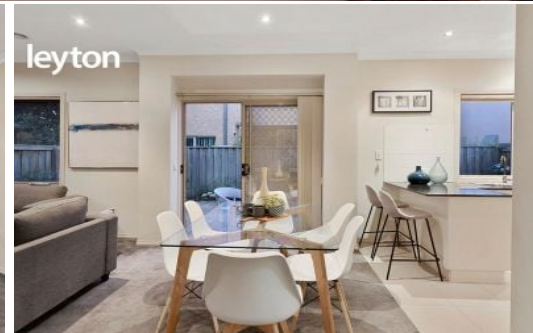
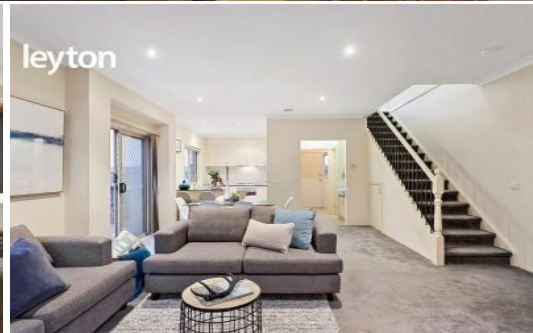


leyton



7/542-544 Springvale Road SPRINGVALE SOUTH

 3
  1
  4

Spacious Townhouse & Perfectly Position

Beautifully presented and well looked after. This two-storey townhouse is an absolute treat for first home buyers, growing families and astute investors looking for a sizeable home in a fantastic location.

Perfectly positioned with all amenities at hand, which includes Springvale Indoor Sport Centre, local temples, bus stops directly at your door step and Kohs Supermarket less than 300m down the road. Additionally, you have easy access to Springvale Central, Keysborough Primary School and Athol Rd, Primary School are only moments away.

Features Include:

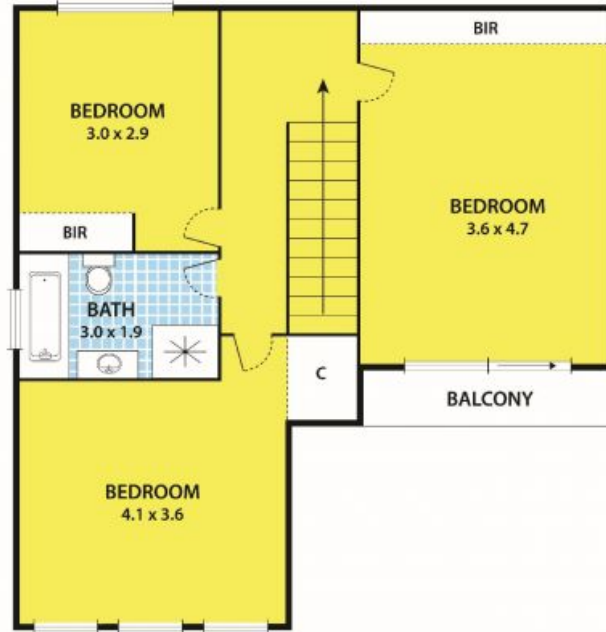
- 3 generous sized bedrooms, all with BIRs
- 1 bathroom
- 2 toilets
- Spacious lounge
- Open kitchen and dining areas, including stone bench tops
- Gas appliances
- Dishwasher
- Ducted heating
- Split A/C

Leyton Real Estate

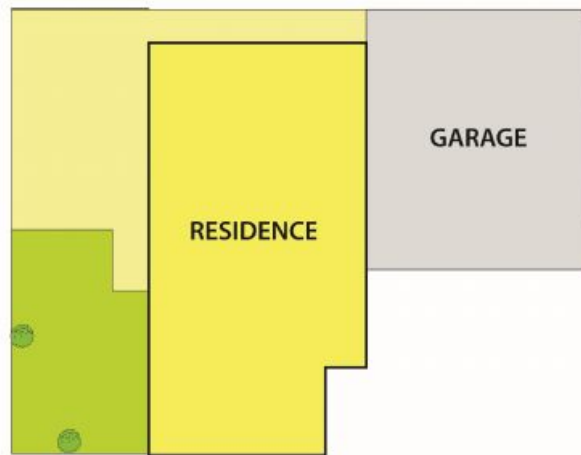
7/542-544 Springvale Rd, SPRINGVALE SOUTH



GROUND FLOOR



FIRST FLOOR



DISCLAIMER:

Please note plans are indicative only and not drawn to exact scale.
All dimensions are approximate