

leyton



14 Watermoor Avenue KILSYTH SOUTH

 4
  2
  8

A Family Home with Endless Possibilities!!

This well presented solid brick veneer family home located in the prominent Kilsyth South Estate has plenty to offer! Built on a massive 994m2 (approx.) land, it is just minutes away to shops, schools and buses.

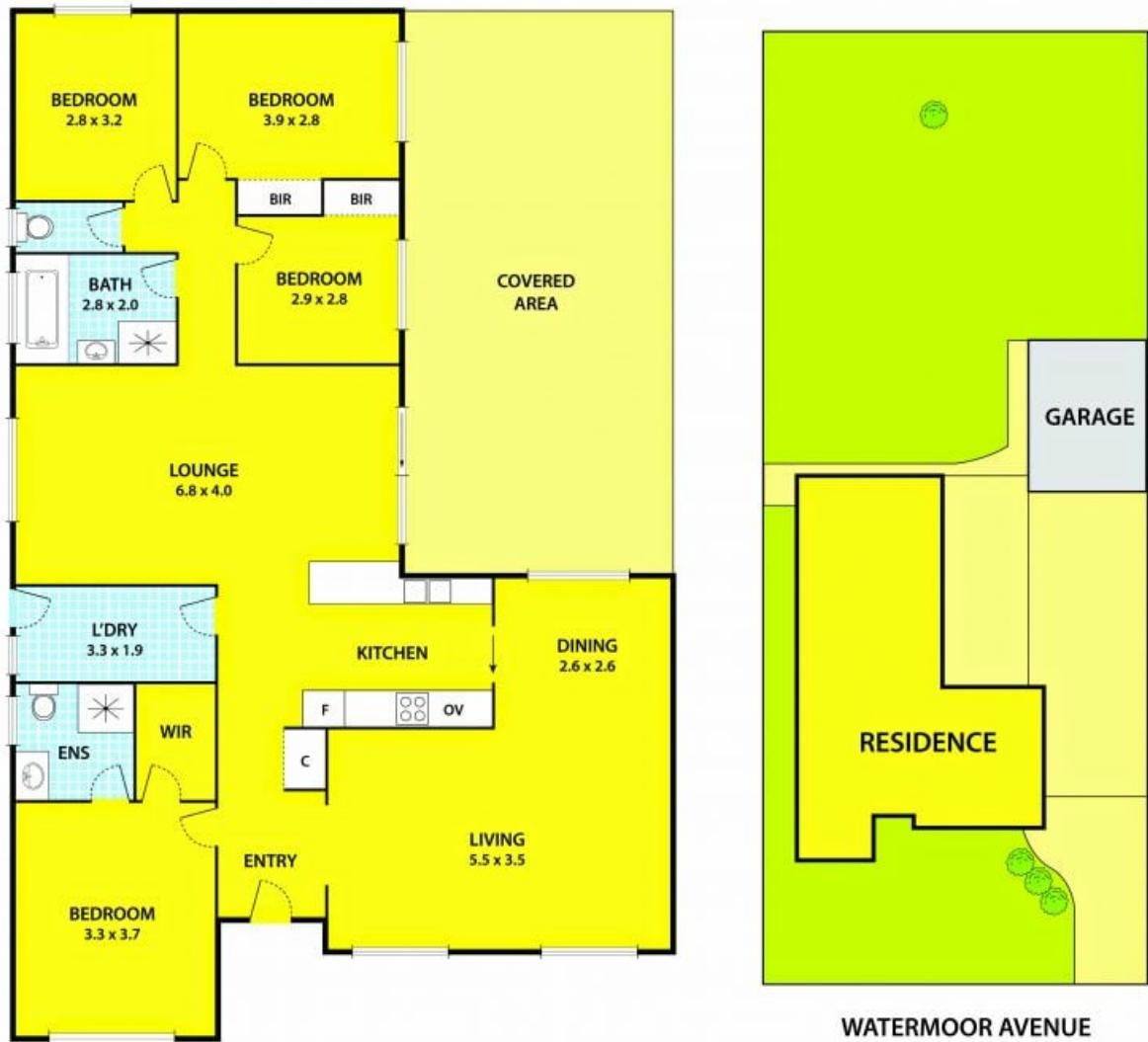
Features include:

- A master bedroom with a walk-in robe and ensuite
- Two bedrooms with built-in robes
- A study which can be converted into a fourth bedroom
- A central bathroom and separate toilet
- Polished timber floorboards and tiling throughout
- Large L-shaped front lounge with air conditioner
- A fully equipped original timber kitchen with an adjoining dining and living areas

Other additional features include: ducted heating, undercover entertainment area, double garage and a spacious enclosed backyard for the kids and pets to run free as well as plenty of room for your own vegetable garden.

Leyton Real Estate

14 Watermoor Avenue, KILSYTH SOUTH



DISCLAIMER:
Please note plans are indicative only and not drawn to exact scale.
All dimensions are approximate