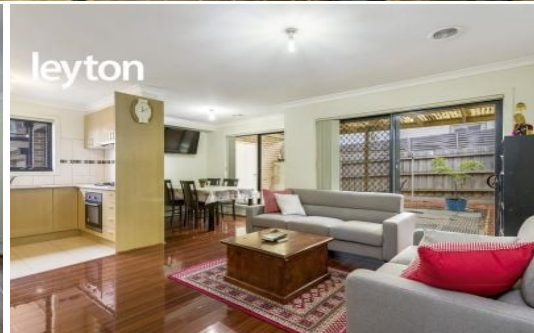


leyton



4/25 Dunblane Road NOBLE PARK

 3
  2
  1

Stylish Townhouse in Best Street in Noble Park!

Perfectly positioned with all amenities at hand which includes Parkfield Reserve, Post Office, hairdressers, local convenient store, variety of restaurants, Skate Park, Noble Park Swimming Pool and Noble Park Primary School and Secondary College all within short walking distance.

Additionally, you have easy access to Heatherton Road and Princes Highway, which you can head away easily towards Dandenong or Melbourne City.

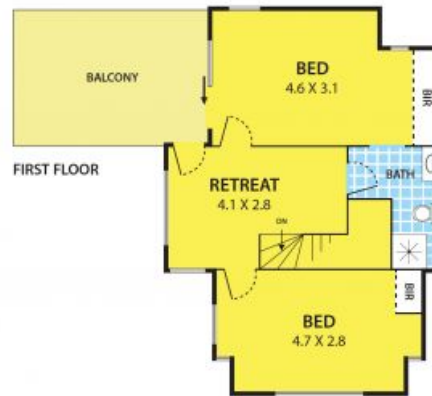
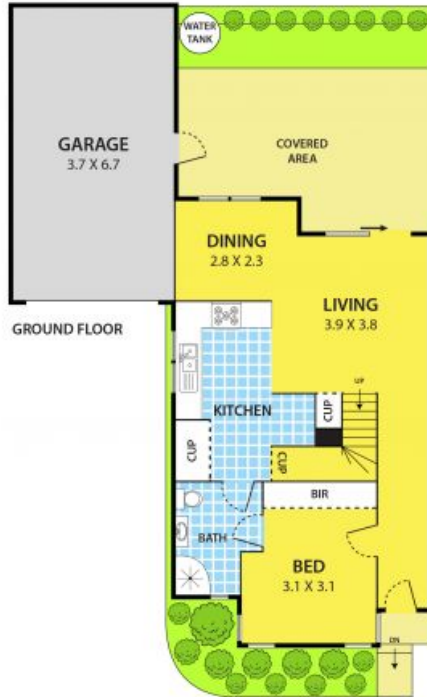
Features Include:

- 3 Bedrooms
- 2 Bathrooms
- 2 Toilets
- Open kitchen & dining area
- Spacious lounge
- Gas appliances
- Ducted heating
- Single garage
- Water tank



E Sha Hat

4/25 Dunblane Road, NOBLE PARK



DISCLAIMER:

Please note plans are indicative only and not drawn to exact scale.
All dimensions are approximate