

15/14-16 Callander Road NOBLE PARK

 2
  1
  1

Comfortable Start

Location is the key, this 2 bedroom unit is close to all amenities that Noble Park has to offer. Approx. 10 minutes walk to newly upgraded Noble Park Train Station, Noble Park Shopping Central, Aquatic Center and bus stop. Easy access to thoroughfare Heatherton Road / Princess Hwy with gyms, restaurants, medical clinics, Harrisfield Kindergarten and Primary schools right at hand!

Featuring: spacious lounge with gas heater, 2 good sized bedrooms with BIRs, light filled kitchen plus meals over-looking courtyard, central bathroom, separate toilet, all gas appliances and lock up garage.

Rental: \$1,390 PCM lease expired January 2019

Ideal for first home buyers, astute investors or downsizers.

PLEASE NOTE:

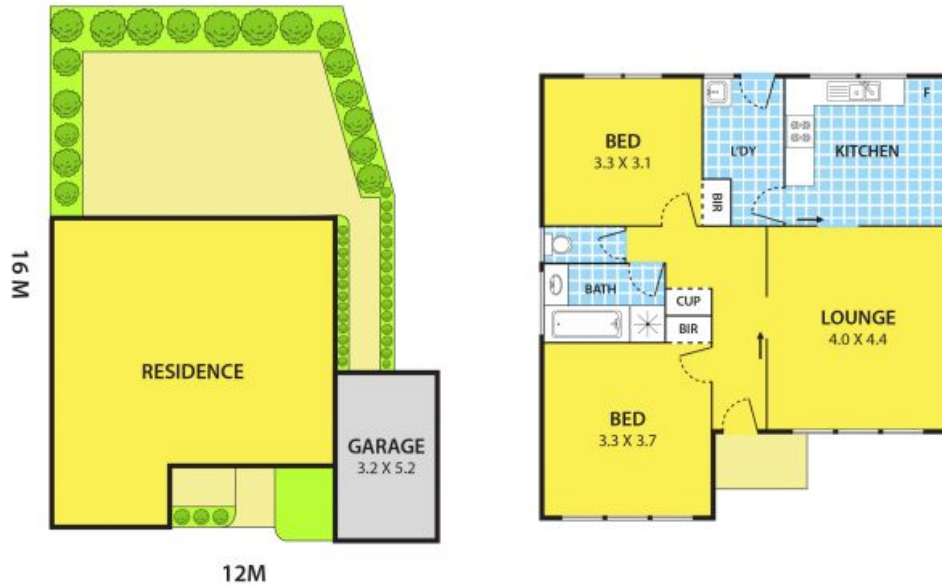
- All enquiries MUST include a contact telephone number
- Photo ID Required for all Inspections



Thu Le

0421 903 814

15/14-16 Callander Road, NOBLE PARK



DISCLAIMER:

Please note plans are indicative only and not drawn to exact scale.
All dimensions are approximate