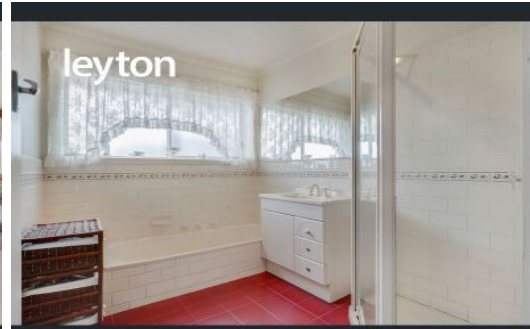
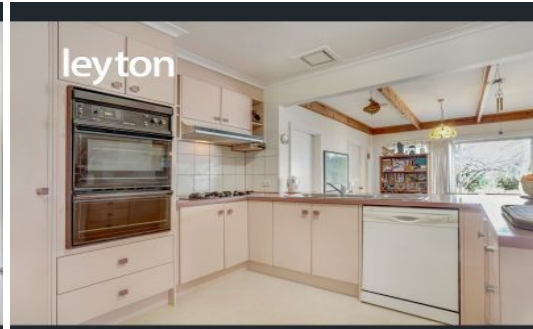
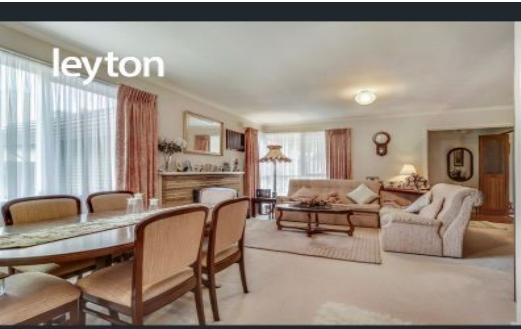


leyton



15 Davidson Street SPRINGVALE

 4
  2
  2

Charming Family Home on approx. 720m2

Located in a highly sought after pocket in Springvale, this charming brick veneer home offers a great opportunity to raise your family or for the astute investor to further capitalise.

Sitting on 720sqm (approx.) allotment, potential multi-unit site (STCA). Only a short walk to Coles Supermarket, Springvale Rise Primary School, parks, bus stops, Springvale Train Station and Springvale Central including an array of restaurants, retail stores, supermarkets and medical centres.. In addition, you have easy access to Princess Highway, Springvale Road, Monash Freeway M1 and a short drive to Springvale Homemaker Centre.

Features Include:

- 4 Bedrooms
- 2 Bathrooms
- 2 Separate Living Areas
- Formal Dining
- Double Lock Up Garage
- Dishwasher
- Split A/C

Leyton Real Estate



This floor plan including furniture, fixture measurements and dimensions are approximate and for illustrative purposes only. Boxbrownie.com gives no guarantee, warranty or representation as to the accuracy and layout. All enquiries must be directed to the agent, vendor or party representing this floor plan.

15 Davidson St SPRINGVALE