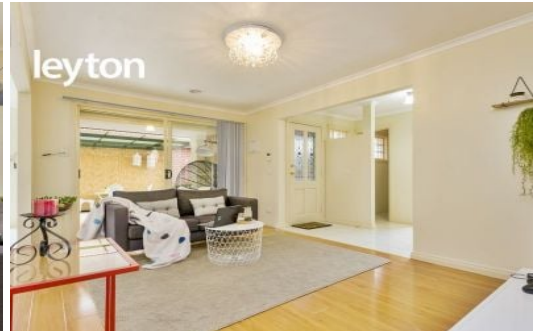


leyton



4/36 Noble Street NOBLE PARK

3 1 1

Modern Easy Living in the Heart of Noble Park..

Modern living and entertaining comes easy with this freshly painted and well-maintained three bedroom residence enjoying peaceful rear aspect, warm natural light and a low maintenance lifestyle. Enviably located, within walking distance from central Noble Park, its guaranteed to impress first time buyers, downsizers and investors.

A convenient lifestyle is assured with Douglas Street Shopping Precinct, Coles Supermarket, cafes, excellent amenities and Noble Park Train Station just a short walk away. With easy access to Noble Park Primary/Secondary College, Keysborough Secondary College, Corrigan Road and Princes Highway.

Property Features:

- Three double bedrooms
- Outdoor entertainment zone, easy care gardens
- Sparkling new kitchen offers modern appliances
- Two-way family size bathroom, new timber floors
- Ducted heating, roller shutters, WIR/BIRs/storage
- Remote operated garage and visitor carpark.



Thu Le

0421 903 814



E Sha Hat

4/36 Noble Street, NOBLE PARK



DISCLAIMER:

Please note plans are indicative only and not drawn to exact scale.
All dimensions are approximate