



12 Lesley Grove NOBLE PARK

 4
  2
  2

Thinking of your next development?

SOLD AT AUCTION!

On offer is a gorgeous block 705m2 (approx), rectangular and situated within walking distances to Sandown Park train station, local Schools and Noble Park/Springvale Shopping Centres.

Take advantage of this wonderful opportunity to plan your multi-unit development site (STCA).

Existing family home features:

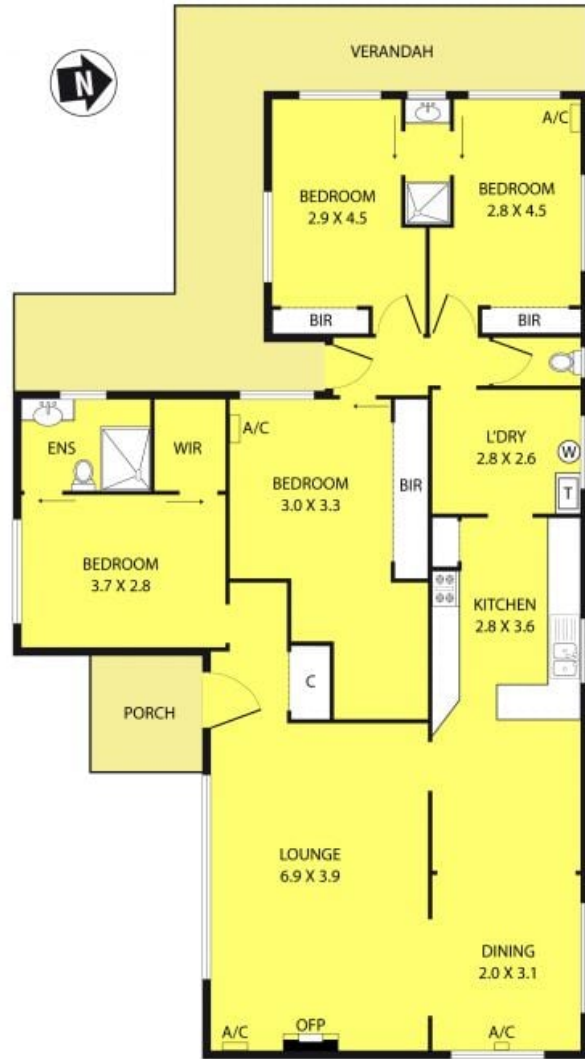
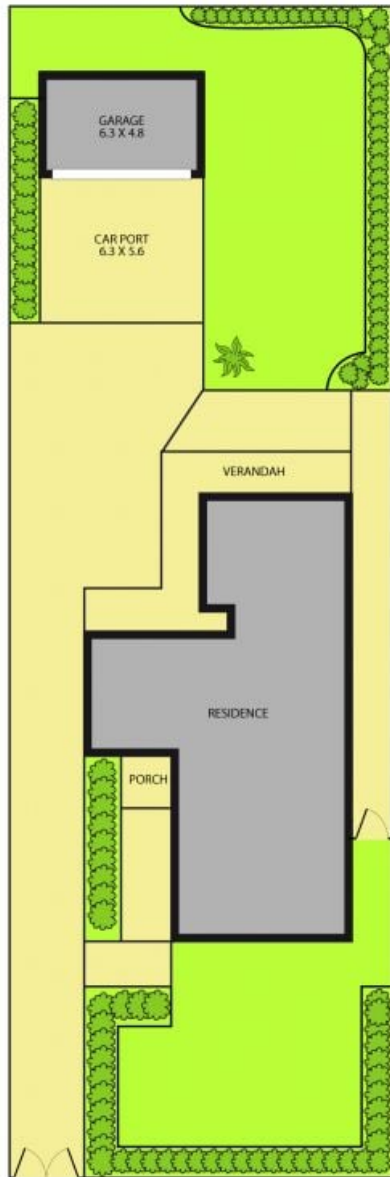
- Four good sized bedrooms
- Master with WIR & FES
- Separate kitchen and meals area
- Spacious lounge
- Massive double car carport

If offers so many options to lease and redevelop.

Contact Phuc Le or Jun Lee today!

Leyton Real Estate

12 Lesley Grove, Noble Park



GROUND FLOOR