



117 Kemp Street SPRINGVALE

4 1 3

## Gorgeous Family Home In A Quiet Location

This solid BV residence on an elevated rectangular 600sqm (approx.) block is ready for you and your family to enjoy.

Situated at one of the most desirable pockets of Springvale with easy access to all the amenities such as Schools, public transport, only minutes drive to Waverley Garden Shopping Centre, Springvale Central, local parks and reserves, Sandown Racecourse, Princes Hwy, M1 and M3.

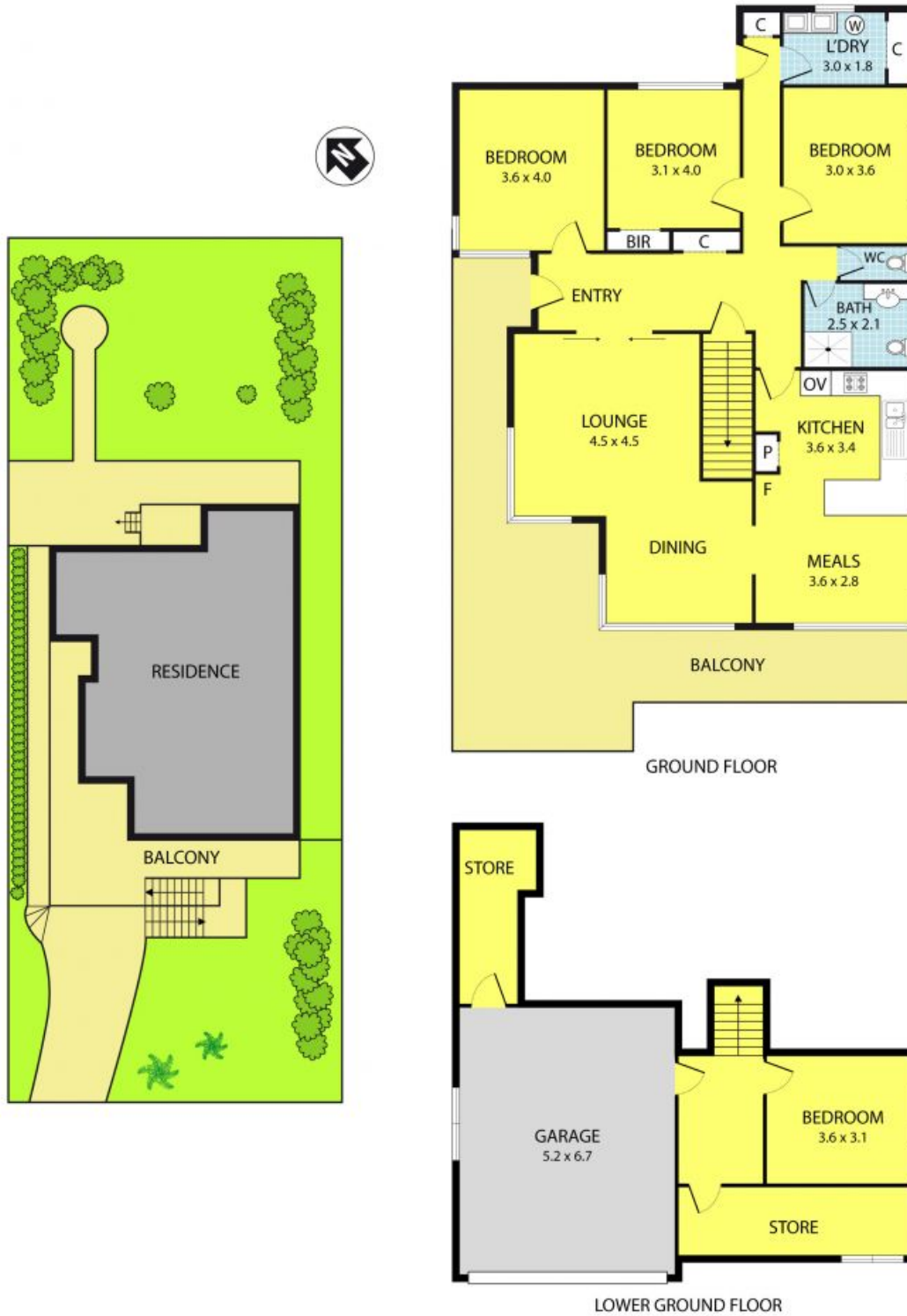
Offering 4 good sized bedrooms with a BIR, spacious and welcoming lounge area plus dining area, freshly renovated bathroom and toilet, updated S/S kitchen adjoining a meal area, ducted heating system through the whole dwelling. A wide back yard is just perfect for relaxation and entertainment. Stepping down to lower level, you will find a bedroom, double LU garage, a wine cellar and a storage room for your belongings.

Contact Phuc Le or Jun Lee today!

Photo ID required for all Inspections

Leyton Real Estate

# 117 Kemp Street, Springvale



Please note: All stated dimensions are approximate only. Particulars given are for general information only and do not constitute any representation on the part of the vendor or agent.