



3/27 Lawn Road NOBLE PARK

 3
  1
  2

Beautiful Villa Unit in Prime Location - SOLD at AUCTION!!

Only 3 on the block and an inactive Body Corporate, this delightful 3 bedroom villa unit is an ideal place to start a family or to invest.

Just minutes' walk to Sandown Train Station, bus stops and Heatherhill Primary School and a short drive to the buzzing Springvale Shopping Centre.

All bedrooms have BIRs, open plan living adjoining to dining/meals area, polished timber floors, Tu-pak kitchen, top quality Caesar stone bench top to kitchen and bathroom, ducted heating, 4 X split A/Cs, alarm, all gas appliances, double carport, low maintenance and much much more...

Contact Thu Le today!

AUCTION on site 02/04/2016 @ 2:30 PM

Terms: 10% deposit

Balance: 120 days, prefer rent back

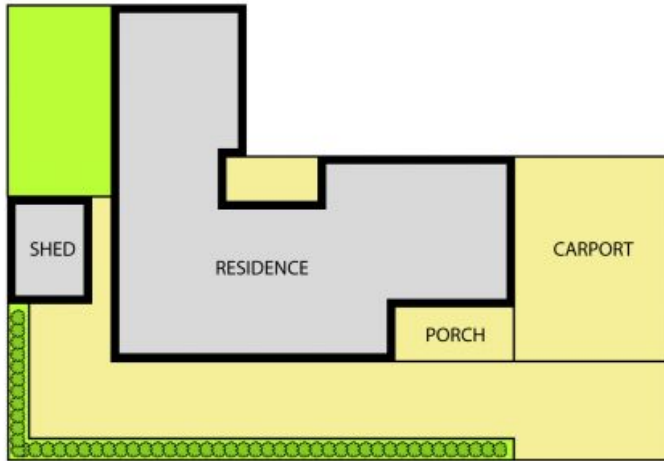
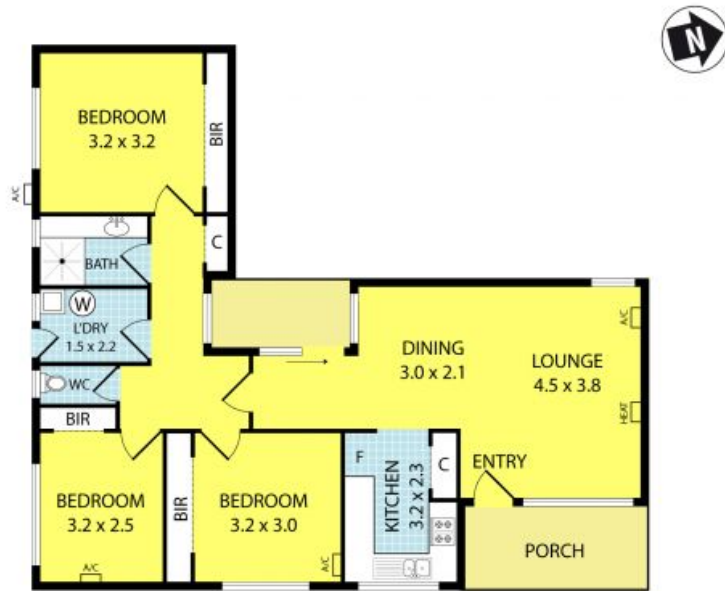
Photo ID Required for all Inspections



Thu Le

0421 903 814

3/27 Lawn Road, Noble Park



Please note: All stated dimensions are approximate only. Particulars given are for general information only and do not constitute any representation on the part of the vendor or agent.