



2/45 Whitworth Avenue SPRINGVALE

3 2 3

Quality and Quantity - SOLD at AUCTION!

A truly rare combination resides in this wonderful family home.

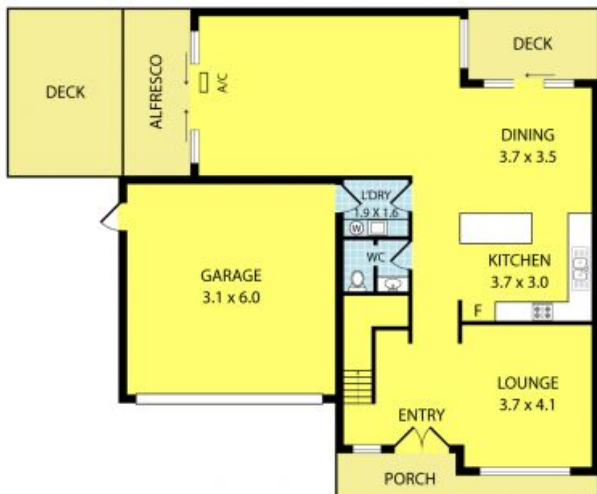
Set on its own separate compact block, this extra-large family townhome will exceed your expectations.

The pair of solid double doors awaits you at the entrance giving a hint of the size and luxury that lays within. Modern and contemporary in design with a build quality that is second to none, this family home features:

- Open plan living
- Large 2 pack kitchen + stone bench tops + stainless steel appliances
- 3 separate living areas, including lounge, massive family room and upstairs rumpus/retreat
- 2 decking areas including alfresco for BBQ and outdoor entertainment
- Timber floorboards throughout
- 3 bedrooms with BIRs including an oversized master with WIR and full en-suite
- 2 deluxe bathrooms and 3 toilets
- Ducted Heating and Evaporative Ducted Cooling
- Double car remote control lockup garage
- Electric front gates

Leyton Real Estate

2/45 Whitworth Avenue, Springvale



GROUND FLOOR



FIRST FLOOR