

10 Sharon Road SPRINGVALE SOUTH

3 2 2

Build your Dream Home in a Fantastic Locale!

Attention dream home builders or savvy developers. Located on a large rectangular block of 630m2 approx., with the possibility of further development (STCA), in one of the most desirable pockets in Springvale South, yet surrounded by a quiet neighbourhood, is this rare opportunity for you to seize!

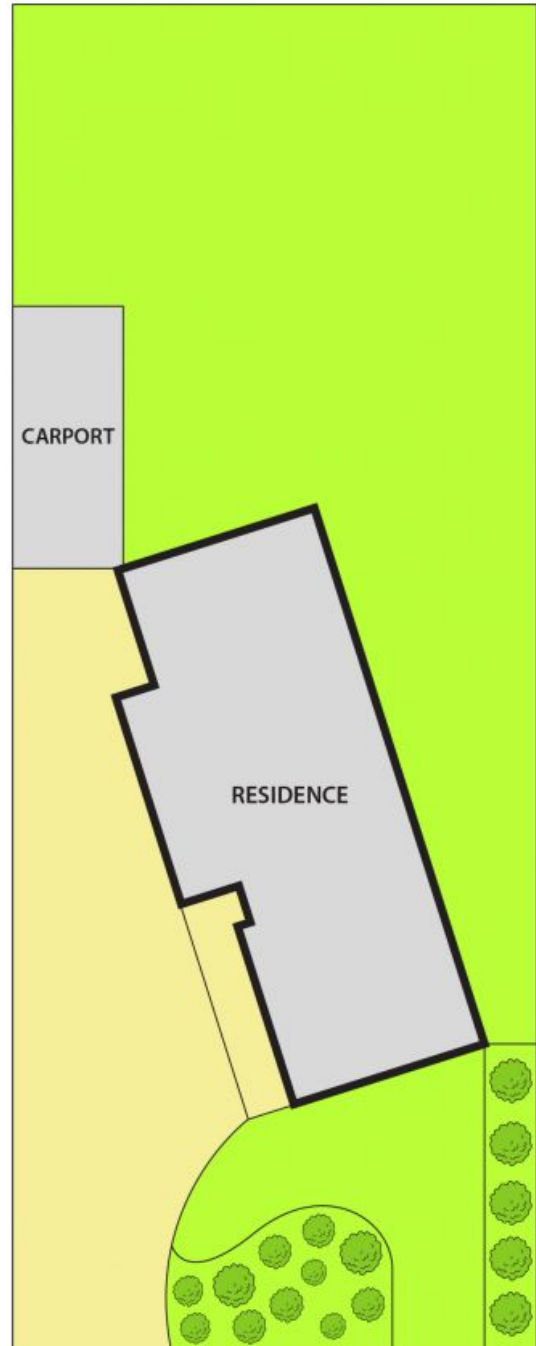
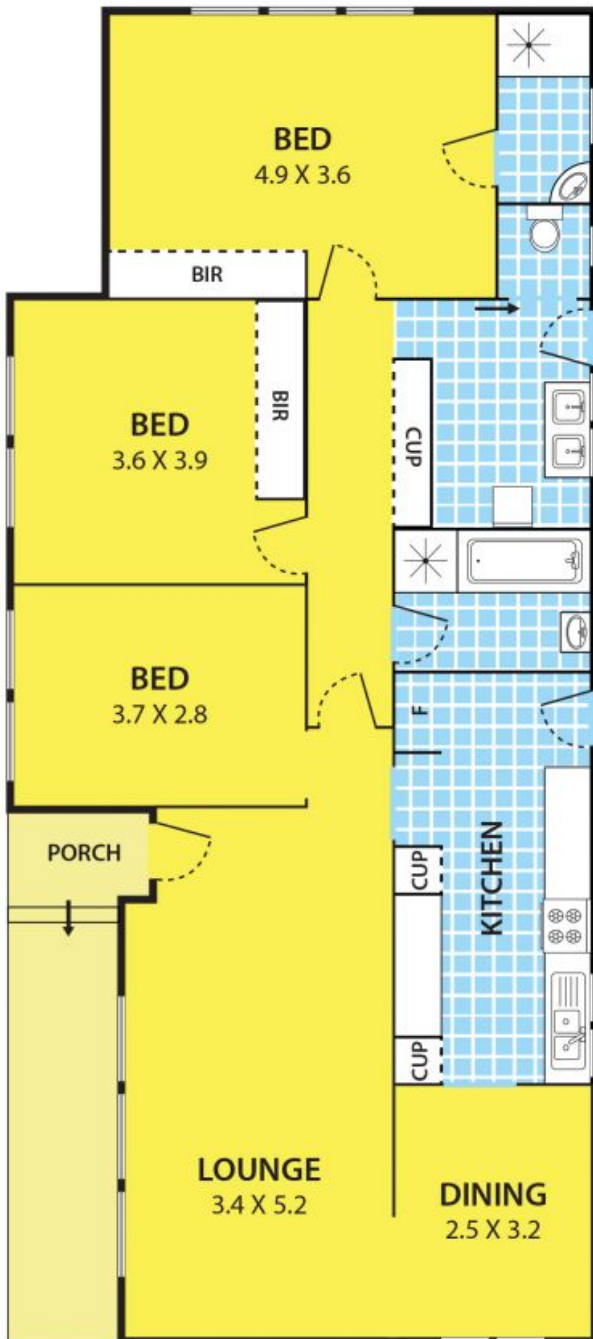
Schools like Heatherhill Pre-School, Keysborough Secondary College, Heatherhill and Athol Road Primary Schools are all within walking distances and not at all that far away from Aldi Supermarket, Mackay Shopping Centre, Temples, Churches and well known Burden Park with BBQ amenities. Easy access to both Springvale and Heatherton Roads and so much more!

Existing dwelling is a 3 bedroom weatherboard home that is unique in its layout with a lounge area, a semi-ensuite, separated bathroom and toilet, kitchen area with gas cooking. With a bit of renovations and TLC, this home has the potential for high rental returns whilst awaiting for your opportunity to redevelop.

Contact Phuc Le or Jun Lee today!

Leyton Real Estate

10 Sharon Road, SPRINGVALE SOUTH



DISCLAIMER:

Please note plans are indicative only and not drawn to exact scale.
All dimensions are approximate