



1/31 Osborne Avenue SPRINGVALE

 4  3  4

### Modern Family Lifestyle in Convenient Location

This young and front facing townhouse lies within the heart of Springvale and is ready for savvy investors to let out straight away, or for one lucky family to appreciate and enjoy.

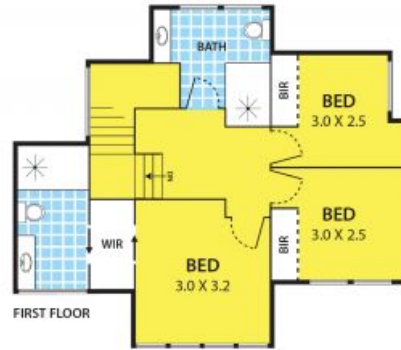
All amenities that you require or may need are just stone throws away. Springvale Central, Train Station and bus stops, Primary and Secondary Schools, local shops, mouth-watering restaurants, parks and reserves are all conveniently within short walks or strolls away. Easy access to Springvale and Westall Roads and just minutes' drive to Princess Hwy and Springvale Homemaker Centre.

This architectural designed townhouse offers: 4 bedrooms, master with WIR and FES and BIRs in all the rest, 3 bathrooms and 3 toilets, including a powder room, kitchen island bench with Caesar stone, gas cooking with glass splashback, Bellissimo dishwasher, floorboards, laundry room, staircase storage, ducted heating and cooling, LED downlights and video intercom.

Stepping outside you have a water tank and a garden shed, a pond in the private rear courtyard and a remote LU garage with its own driveway and

**Leyton Real Estate**

## 1/31 Osborne Avenue, SPRINGVALE



**DISCLAIMER:**

Please note plans are indicative only and not drawn to exact scale.  
All dimensions are approximate