

leyton



52 Springfield Road SPRINGVALE SOUTH

3 1 2

Comfortable First Home or Smart Investment

Set on a well-maintained corner allotment is a light and bright three bedroom single level brick home providing immediate comfort for lucky new owners to enjoy straight away. Alternatively, it also offers an exciting entry-level opportunity for savvy first-time buyers and investors.

With Springvale South Plaza- Aldi store, MacKay Shopping Centre and a choice of Childcares, Kindergartens and Schools nearby. Bus stops at the front door and easy access to temples, Spring Valley Reserve parklands and walking trails, Heatherton Road and the Dingley/Westall Bypass adds certain appeal for families and commuters.

Property features:

- Spacious living, new floorboards
- Modern kitchen and appliances
- Three bedrooms with Semi-arrange en-suite, central bathroom, 2 toilets
- 20 solar panels-5KW
- 3 X split-system air conditioners
- Lock-up double carport plus storage

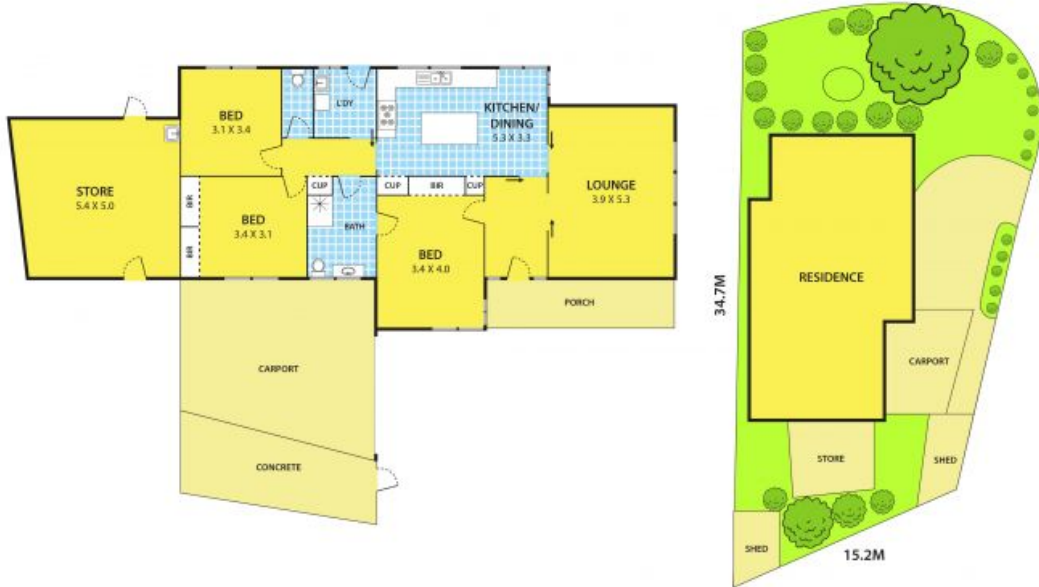
Potential lease @ \$410 p/w



Thu Le

0421 903 814

52 Springfield Road, SPRINGVALE SOUTH



DISCLAIMER:

Please note plans are indicative only and not drawn to exact scale.
All dimensions are approximate