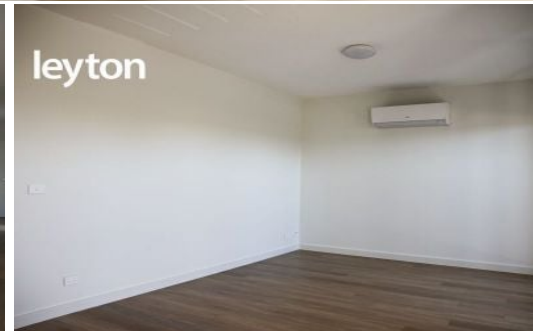
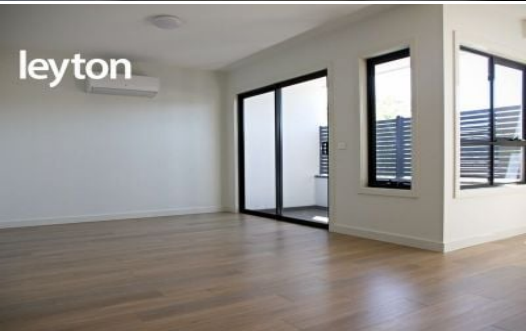
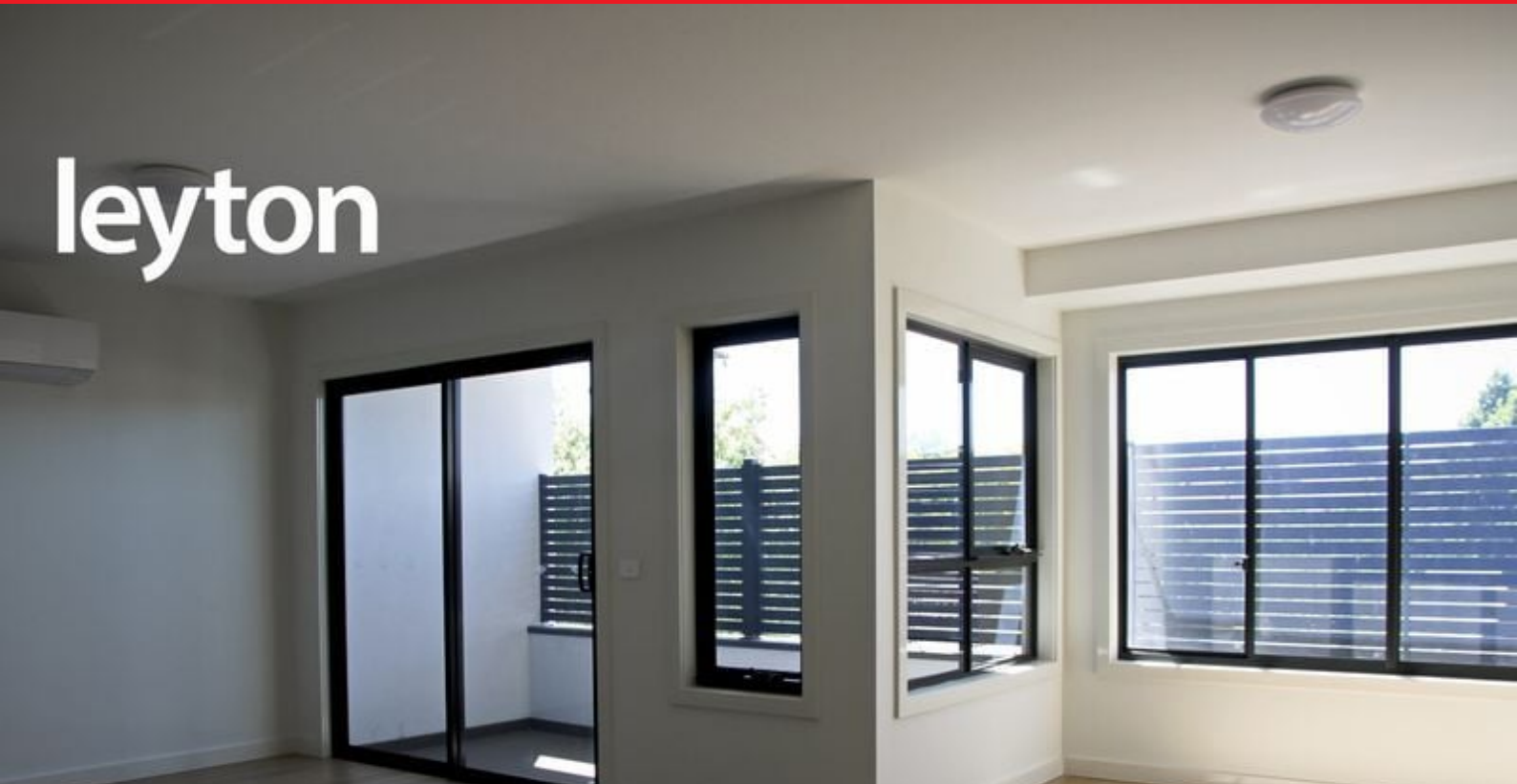


leyton



3/168 Clayton Road CLAYTON

 2  2  1

New 2 bedroom apartment in the heart of Clayton

Located in the heart of Clayton - walking distance to Monash Hospital, Monash Uni & Clayton train station within a 15 minute walk.

The features include:

- Great sized lounge room with timber floor and split system
- Modern kitchen with gas cooking and ample cupboard space
- Two bedrooms with built in robes and carpet
- Two bathroom including full ensuite for master bedroom
- Single car stacker



Property Management