

leyton



7/32 Ellendale Road NOBLE PARK

 1
  1
  1

## Why Rent! A perfect investment or First Home Buyer!

When you can obtain this cosy fully renovated single bedroom unit located in one of the most convenient pockets of Noble Park, next to Noble Park Tennis Club, Parkfield Reserve and Kinder World Day Care Centre.

Located only 1km to Noble Park Train Station, yet conveniently close to all amenities: Noble Park Shopping Central, Coles Supermarket, Aquatic Centre, bus stops, doctor clinics, Harrisfield Primary School, Noble Park Secondary College, South Eastern Private Hospital and easy access to Princess Hwy and EastLink.

Featuring: 1 bedroom with BIR, open plan kitchen and living area, 2 split A/Cs, electric appliances, 1.9KW solar panels, own carport and much more...

Humble beginning but it is a home!

Do not miss out, make this one your priority inspection.

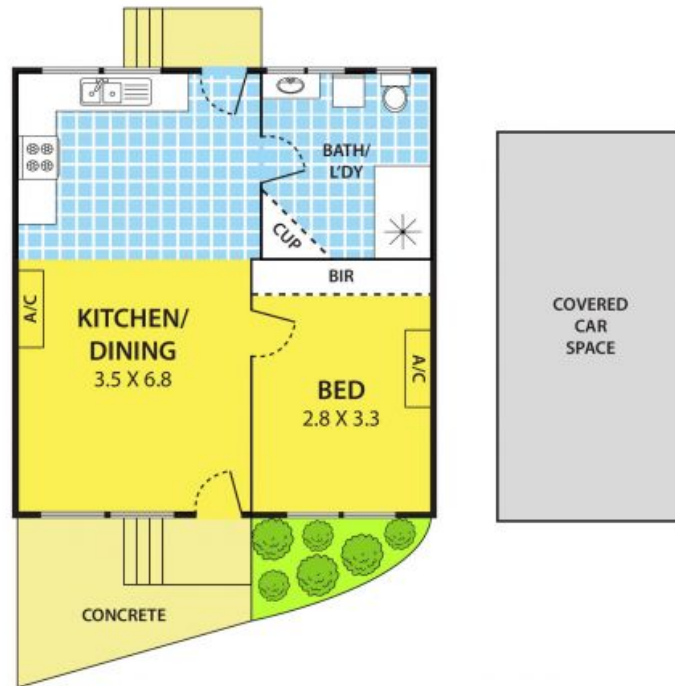
Council rate: \$915.68/PA



**Thu Le**

0421 903 814

# 7/32 Ellendale Road, NOBLE PARK



**DISCLAIMER:**

Please note plans are indicative only and not drawn to exact scale.  
All dimensions are approximate