



877 Heatherton Road SPRINGVALE

3 1 2

Prime opportunity in a high growth locale

Promising a bright and rewarding future in a prime high growth location, this well-cared for three-bedroom home is nestled on a generous garden block of approximately 540sqm. Featuring modern kitchen and comfortable surroundings, it offers a convenient lifestyle and excellent scope to further improve and invest or start over (STCA).

Enviably situated within walking distance of Burden Park, Heatherhill Primary and Killester College, as well as Springvale Library, Springvale Plaza, Aldi supermarket and bus stops. With Springvale Central and Athol Road shops and Sandown Station just a short car trip away.

Property features:

- Formal lounge enjoys garden outlooks
- Near new kitchen (just over a year old)
- Generous storage, modern gas appliances
- Sunroom, comfortable bedrooms, one with BIR
- Central bathroom, split-system air conditioner
- Long side driveway/OSP, single car garage

Potential lease at \$420 p/w



Thu Le

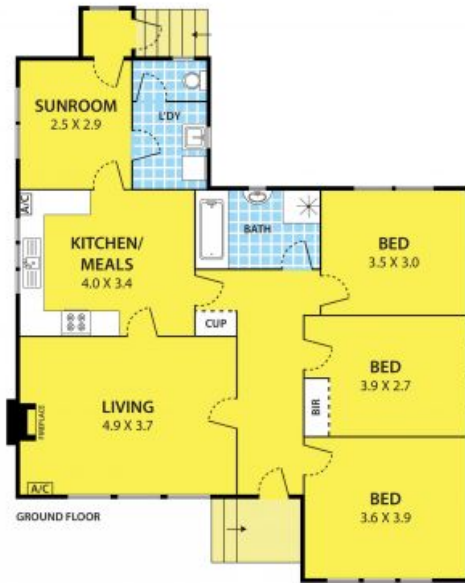
0421 903 814



Nora Man

0416779452

877 Heatherton Road, SPRINGVALE



DISCLAIMER:

Please note plans are indicative only and not drawn to exact scale.
All dimensions are approximate