



leyton



leyton



leyton

7/1-3 Forster Street NOBLE PARK

 2  1  1

Convenient Entry Level Home or Investment..

Freshly painted, smartly renovated and ready to simply move straight in or lease out. This spacious two bedroom property is situated for lifestyle advantage. Part of a small select block, the home enjoys abundant natural light.

In the heart of Noble Park and Springvale , it's just a 2 minute walk from Sandown Park Station offering a 30 to 40 minute commute into the CBD. Adding extra appeal, it's within a stroll to Noble Park Shopping Centre and Springvale Shopping Centre, Ross Reserve, Noble Park Aquatic Centre, Noble Park Primary and Secondary schools.

Property Features:

- Light filled living enjoys elevated views
- Bright kitchen/meals with electric stove
- Generous bedroom offers built-in-robe
- Refreshed bathroom with a tiled floor
- New Flooring

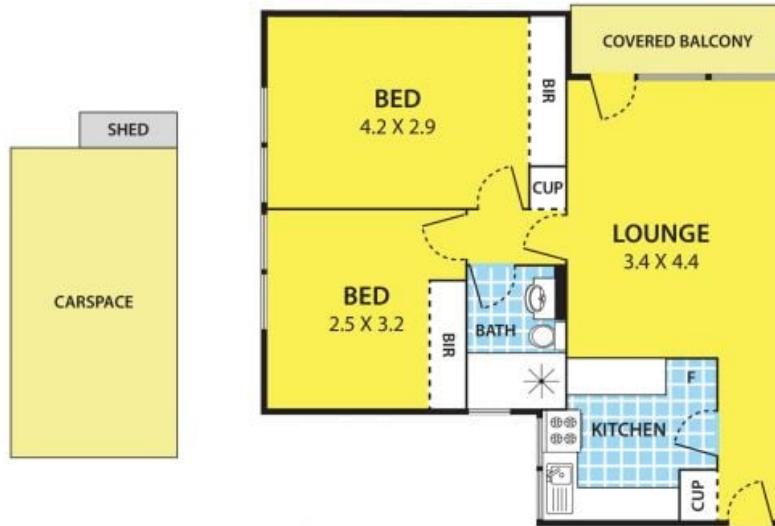
Photo ID required for all inspection



Tony Le

0412 133 378

7/1-3 Forster Street, NOBLE PARK



DISCLAIMER:

Please note plans are indicative only and not drawn to exact scale.
All dimensions are approximate