



leyton



leyton



leyton

2/741 Heatherton Road SPRINGVALE

 3
  1
  3

**ONLY 2 ON THE BLOCK, NO BODY CORP!  
SECURE WITH PRIVATE SPACES!**

This spacious 3-bedroom unit, adorned with a striking red brick veneer, occupies a generous 310m2 subdivision with only two units on the block. Ideal for young families, investors, or downsizers, it offers:

Proximity to Springvale Parks Primary School, bus stops, and the Community Kids Springvale South Early Education Centre, with convenient access to petrol stations. A short drive away are Aldi, Springvale Plaza Shopping Centre, and educational facilities like Storey House Early Learning and Olinda Avenue Kindergarten, as well as Westall train station, Springvale Home Maker Centre, MCity, and Monash University.

Minutes from Springvale underground Train Station, Shopping Central, and a variety of dining options, cafes, and fresh produce markets. Easy access to major roads including the Princes Hwy, M1 Monash Freeway, Dandenong and Dingley Bypass, and Mornington Peninsula - M11.

This unit boasts a spacious formal lounge, illuminated kitchen



**Tony Le**

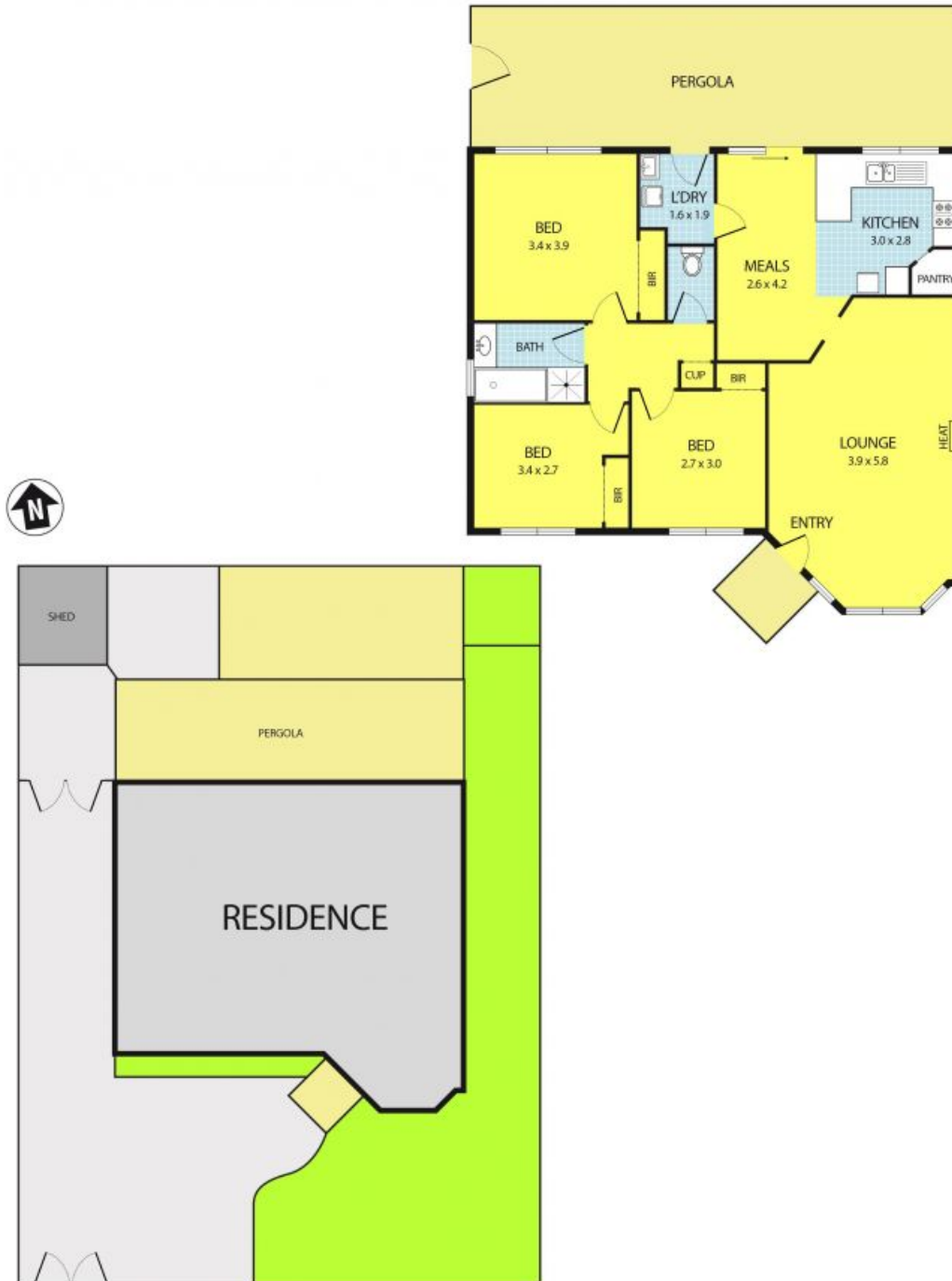
0412 133 378



**Nora Man**

0416779452

2/741 Heatherton Road, Springvale



Please note: All stated dimensions are approximate only. Particulars given are for general information only and do not constitute any representation on the part of the vendor or agent.