




# leyton<sup>®</sup>



**2 Regina Street Springvale South VIC**

**5**  **2**  **6** 

Discover a perfect blend of creative design, stylish finishes, and effortless living in this sophisticated urban oasis. This home conveniently located within a peaceful street and yet convenient in Springvale South. Walking distance to Bus stops, Gym and sport clubs, Temples, Athol Road Shopping Central and Athol Primary School. Only moments away to Keysborough Primary School and Keysborough Secondary College Banksia Campus, Churches, Childcare Centres. It's also just a short distance to Springvale's premier shopping centre, with easy access to highways and freeways.

Featuring 3 bedrooms in the main house and with additionally three more versatile rooms, this property offers a total of 6 bedrooms, perfect for large families or groups. The interior boasts polished floorboards throughout, a

**Type** : House  
**Price** : \$ 890,000  
**Land Size** : 582 sqm  
**View** : <https://www.leytonre.com.au/8026132>

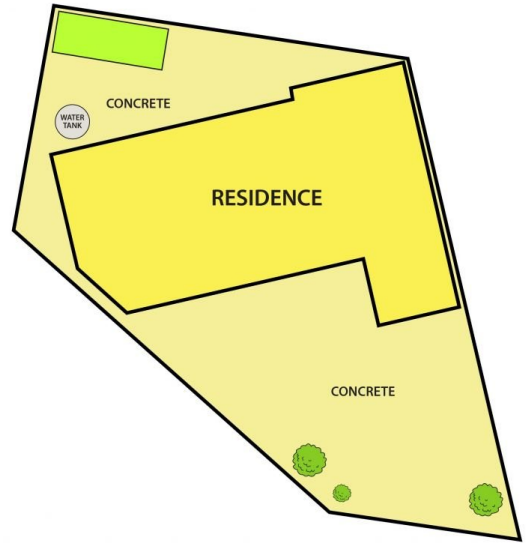
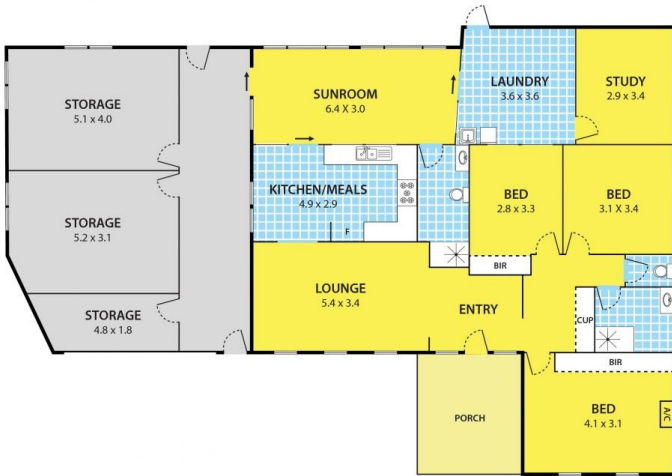


**Thu Le**  
**03 9547 0345**

[For full version visit the website](https://www.leytonre.com.au)

<https://www.leytonre.com.au>

## 2 Regina Street, SPRINGVALE SOUTH



DISCLAIMER:

Please note plans are indicative only and not drawn to exact scale.  
All dimensions are approximate