

# leyton<sup>®</sup>



**4/1080 Heatherton Road Noble Park VIC**

2 2 1

Discover the perfect blend of modern elegance and everyday comfort with this stunning brand-new townhouse in sought-after Noble Park. Thoughtfully designed with premium finishes and contemporary features, this home offers everything you need for a stylish and convenient lifestyle.

**Type** : Townhouse

**Price** : \$680,000

**View** : <https://www.leytonre.com.au/8315356>

Ground Floor:

- \* Light-filled open-plan living and dining area
- \* Sleek stone-bench kitchen with stainless steel appliances, including a dishwasher
- ? High ceilings, LED downlights & premium timber flooring throughout
- ? Convenient powder room
- ? Single garage with internal access



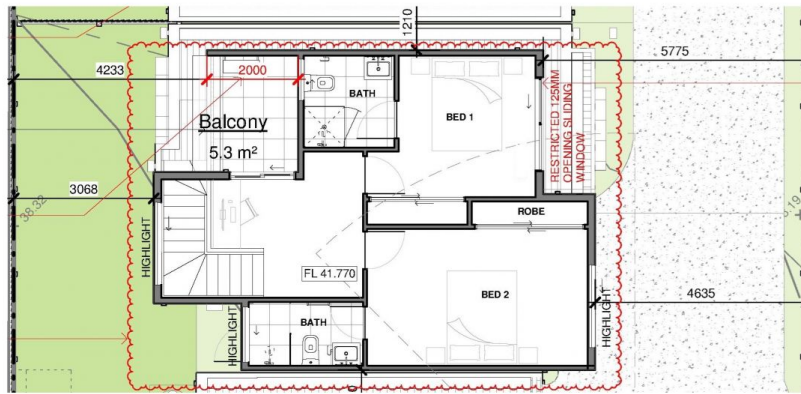
**Thu Le**  
03 9547 0345



**Kosal Prum**  
0423 610 870

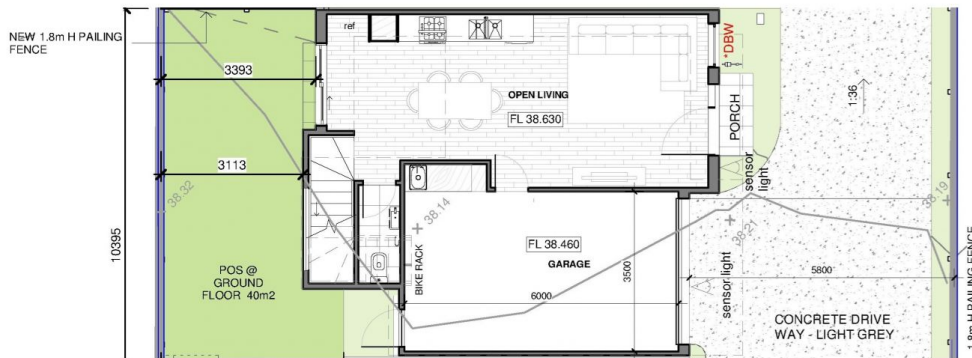
[For full version visit the website](https://www.leytonre.com.au)

<https://www.leytonre.com.au>



1080 Heatherton Rd,  
Noble Park

FIRST FLOOR  
PLAN



1080 Heatherton Rd,  
Noble Park

GROUND FLOOR  
PLAN

